

STAINLESS METAL CRAFT

6 BROMLEY ROAD EMU PLAINS 2750
PHONE: (02) 4735 5666 FAX: (02) 4735 7950
E-MAIL info@smcstainless.com.au
www.smcstainless.com.au

THE STAINLESS STEEL PEOPLE

(SINCE 1962)

MATERIAL - GRADE 304 STAINLESS STEEL

MIXING STATION CUPBOARD



OPTIONS

* 1 , 2 OR 3 STATION
UNITS IF REQUIRED

* TYPICAL USE :

- MIXING STATION CUPBOARD FOR PREVENTION OF ACCESS AND VANDALISM OF CONCENTRATED CHEMICAL MIXING POINT .
- GAOLS, JUVENILE JUSTICE CENTRES, COURT HOUSES, IMMIGRATION CENTRES, PSYCHIATRIC HOSPITALS .

**DATA
SHEET**

ITEM: MIXING STATION CUPBOARD

CODE: MSC-1

DATE:

MARCH - 2003

REV:

C

PAGE No:

187

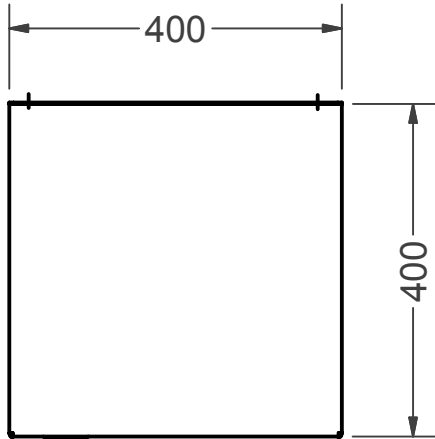
STAINLESS METAL CRAFT

6 BROMLEY ROAD EMU PLAINS 2750
PHONE: (02) 4735 5666 FAX: (02) 4735 7950
E-MAIL info@smcstainless.com.au
www.smcstainless.com.au

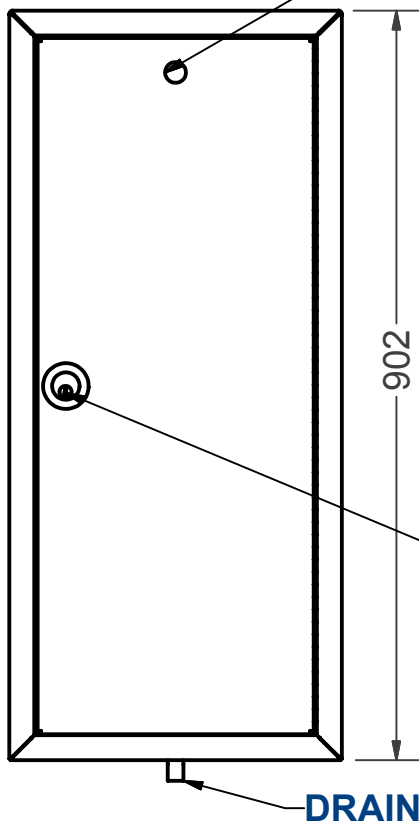
THE STAINLESS STEEL PEOPLE

(SINCE 1962)

MATERIAL - GRADE 304 STAINLESS STEEL



HOLED TO SUIT THE
JASOL MIXING STATION
(BY OTHER)

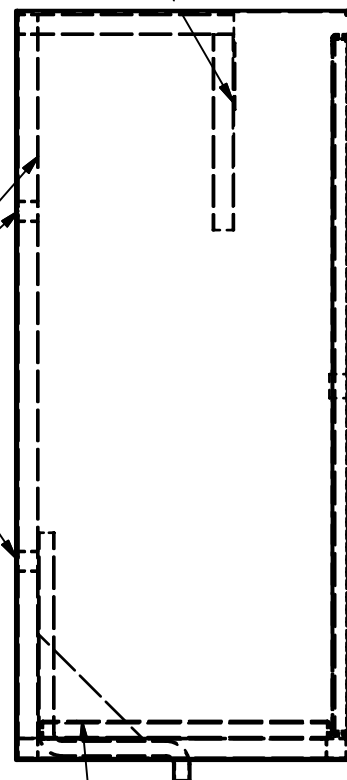


INTERNAL FRAME

FIXING POINTS

LOCK SUPPLIED
BY OTHERS

SUPPORT BRACKET
TO HOLD
JASOL MIXER



PERFORATED BASE
FOR CHEMICAL
CONTAINER ELEVATION

**SPECIFICATIONS -
STAINLESS STEEL COMBINATION UNIT
SHALL BE MODEL MSC-1 FROM
STAINLESS METAL CRAFT
PHONE: 02 4735 5666**

**DATA
SHEET**

ITEM: MIXING STATION CUPBOARD

CODE: MSC-1

DATE:

MARCH - 2003

REV:

C

PAGE No:

187