

STAINLESS METAL CRAFT

6 BROMLEY ROAD EMU PLAINS 2750
PHONE: (02) 4735 5666 FAX: (02) 4735 7950
E-MAIL info@smcstainless.com.au
www.smcstainless.com.au

THE STAINLESS STEEL PEOPLE

(SINCE 1962)

MATERIAL - GRADE 304 STAINLESS STEEL

SENSOR FLUSH CISTERN CASE



OPTIONS

- * MARINE GRADE 316
- * WALL MOUNTED MODEL AVAILABLE

* TYPICAL USE :
- FOR USE WITH A SENSOR UNIT WHERE A WATER RESERVOIR IS REQUIRED

NOTE: NORMALLY MOUNTED IN ROOF SPACE

- * PUBLIC AMENITIES eg COUNCIL / RAILWAY STATIONS / SHOPPING CENTRES
- * SCHOOLS / INDUSTRY / CLUBS / HOTELS

**DATA
SHEET**

ITEM: SENSOR FLUSH CISTERN CASE

CODE: SCC-2

DATE:

MARCH - 2003

REV:

C

PAGE No:

65

STAINLESS METAL CRAFT

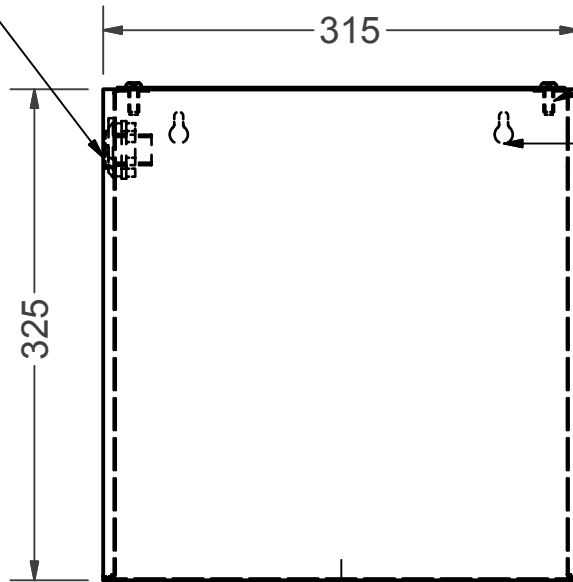
6 BROMLEY ROAD EMU PLAINS 2750
 PHONE: (02) 4735 5666 FAX: (02) 4735 7950
 E-MAIL info@smcstainless.com.au
www.smcstainless.com.au

THE STAINLESS STEEL PEOPLE

(SINCE 1962)

MATERIAL - GRADE 304 STAINLESS STEEL

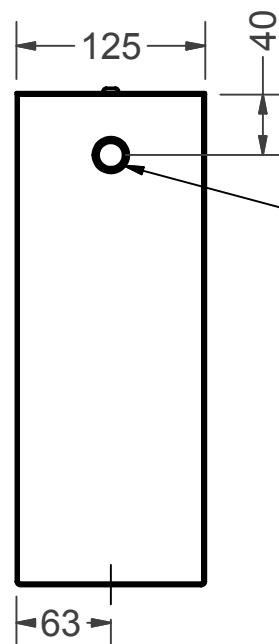
PLUG ON LEFT SIDE
 MAKES CISTERN
 FULLY REVERSIBLE
 BY PLUMBER



SCREW FIXED LID

KEY HOLE SLOTS
 FOR MOUNTING

35mm OUTLET HOLE
 FOR 1" BSP



23mm INLET
 FOR 1/2" BSP

**SPECIFICATIONS -
 STAINLESS STEEL CISTERN CASE
 SHALL BE MODEL SCC-2 FROM
 STAINLESS METAL CRAFT
 PHONE: 02 4735 5666**

**DATA
 SHEET**

ITEM: SENSOR FLUSH CISTERN CASE

CODE: SCC-2

DATE:

MARCH - 2003

REV:

C

PAGE No:

65