

STAINLESS METAL CRAFT

6 BROMLEY ROAD EMU PLAINS 2750
PHONE: (02) 4735 5666 FAX: (02) 4735 7950
E-MAIL info@smcstainless.com.au
www.smcstainless.com.au

THE STAINLESS STEEL PEOPLE

(SINCE 1962)

MATERIAL - GRADE 316 STAINLESS STEEL

SOAP / SHAMPOO SHELF



* TYPICAL USE -
-- VANDAL RESISTANT SOAP / SHAMPOO SHELF

* CLUBS / HOTELS / GYMNASIUM / SWIMMING POOLS
* COMMERCIAL / INDUSTRIAL / AMENITIES BLOCKS

**DATA
SHEET**

ITEM: SOAP/ SHAMPOO SHELF

CODE: SSS-1

DATE:	FEBRUARY - 2003		
REV:	C	PAGE No:	116

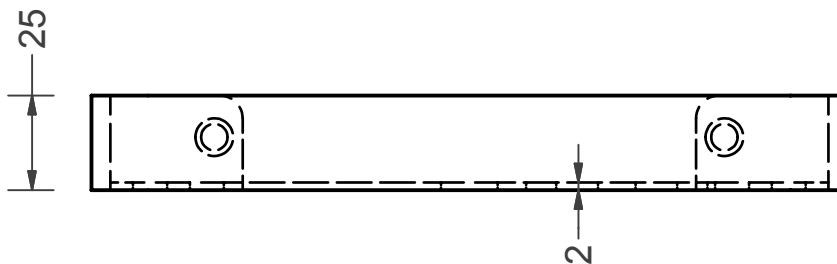
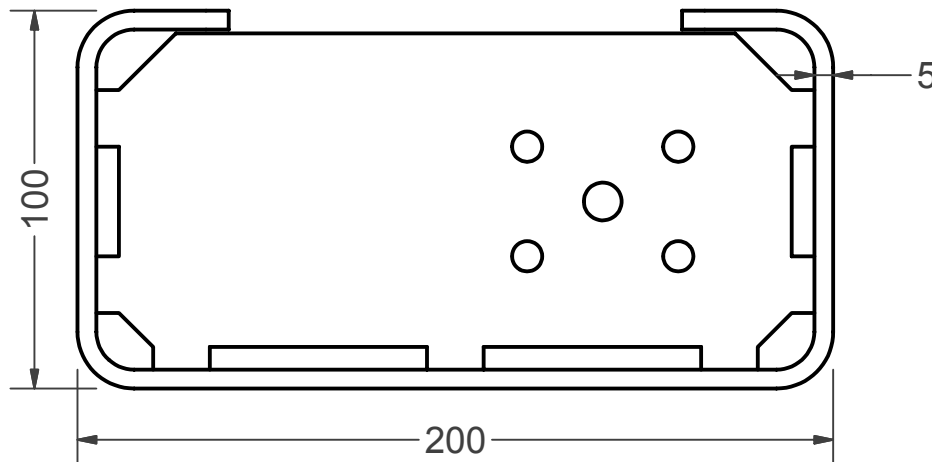
STAINLESS METAL CRAFT

6 BROMLEY ROAD EMU PLAINS 2750
PHONE: (02) 4735 5666 FAX: (02) 4735 7950
E-MAIL info@smcstainless.com.au
www.smcstainless.com.au

THE STAINLESS STEEL PEOPLE

(SINCE 1962)

MATERIAL - GRADE 316 STAINLESS STEEL



SPECIFICATIONS -
STAINLESS STEEL SOAP / SHAMPOO SHELF
SHALL BE MODEL SSS-1
STAINLESS METAL CRAFT
PHONE: 02 4735 5666

**DATA
SHEET**

ITEM: SOAP/ SHAMPOO SHELF

CODE: SSS-1

DATE:

FEBRUARY - 2003

REV:

C

PAGE No:

116