

STAINLESS METAL CRAFT

6 BROMLEY ROAD EMU PLAINS 2750
PHONE: (02) 4735 5666 FAX: (02) 4735 7950
E-MAIL info@smcstainless.com.au
www.smcstainless.com.au

THE STAINLESS STEEL PEOPLE

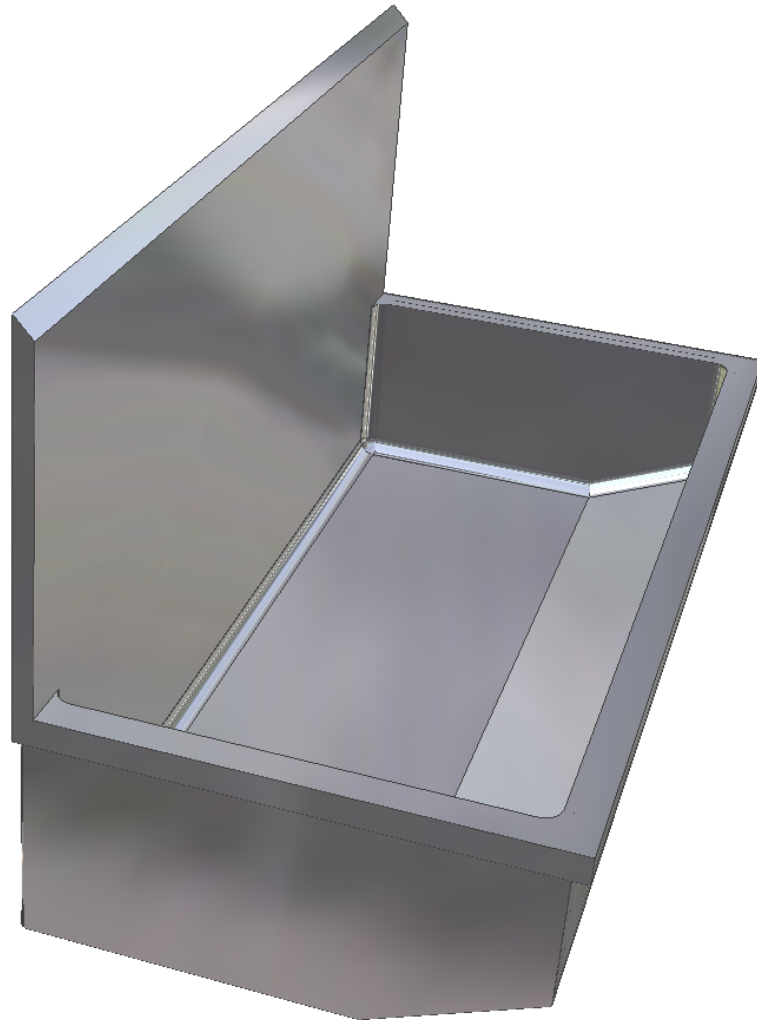
(SINCE 1962)

MATERIAL - GRADE 304 STAINLESS STEEL

SCRUB UP TROUGH

OPTIONS

- * BRACKETS OR LEGS
- * CENTRE OR END OUTLET
- * SPLASBACK TO REAR & SIDES - VARIABLE HEIGHT
- * TAP HOLES AS REQUIRED
- * OTHER DESIGNS AVAILABLE ON REQUEST



* TYPICAL USE -

- BY MEDICAL STAFF FOR STERILE WASH UP BEFORE SURGERY
- ANY PROCEDURE REQUIRING STERILE HANDS & ARMS

* HOSPITALS / DAY SURGERY / VETERINARY / PHARMACEUTICAL MANUFACTURE

* ALLOW 800mm PER PERSON

**DATA
SHEET**

ITEM: SCRUB UP TROUGH

CODE: SUT-1

DATE:

FEBRUARY - 2003

REV:

C

PAGE No:

108

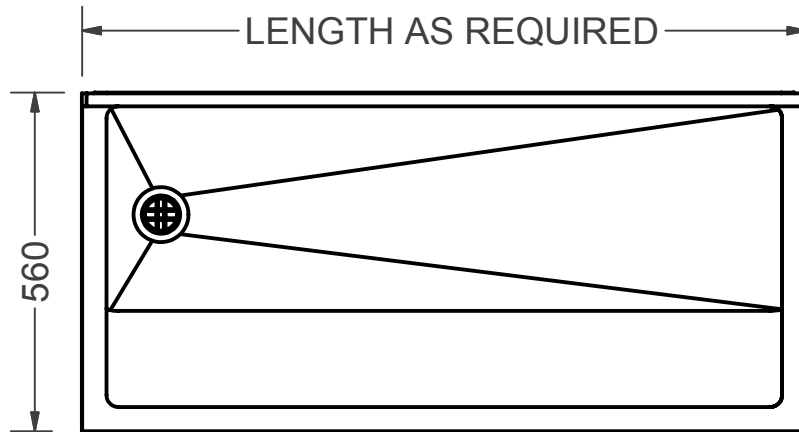
STAINLESS METAL CRAFT

6 BROMLEY ROAD EMU PLAINS 2750
PHONE: (02) 4735 5666 FAX: (02) 4735 7950
E-MAIL info@smcstainless.com.au
www.smcstainless.com.au

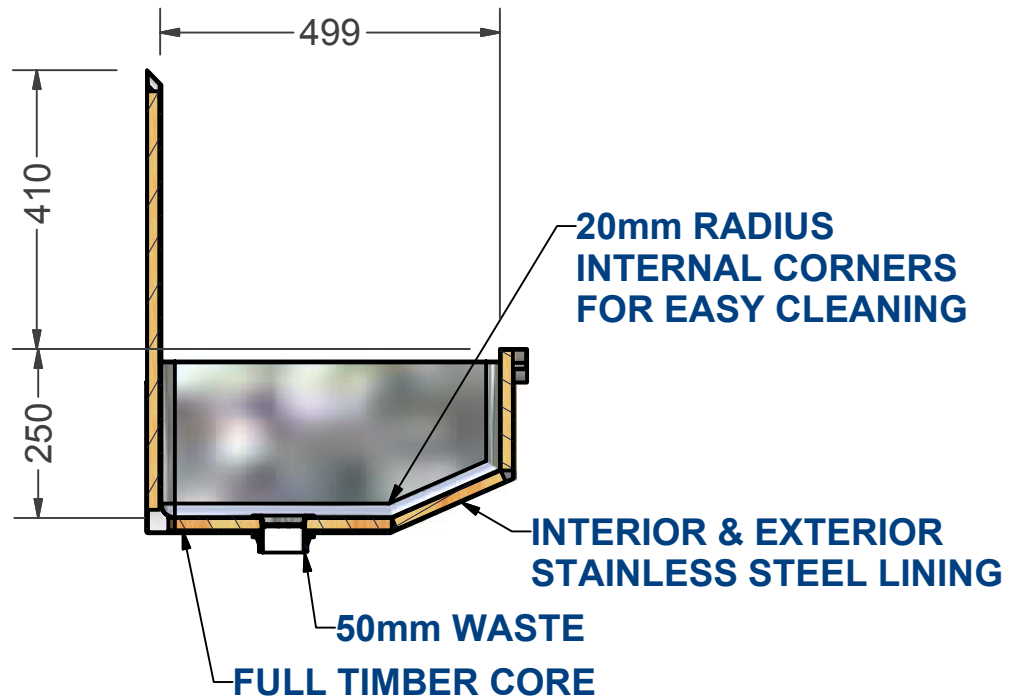
THE STAINLESS STEEL PEOPLE

(SINCE 1962)

MATERIAL - GRADE 304 STAINLESS STEEL



**130 MINIMUM
END OUTLET PREFERRED**



**SPECIFICATIONS -
STAINLESS STEEL SCRUB UP TROUGH
SHALL BE MODEL SUT-1 FROM
STAINLESS METAL CRAFT
PHONE: 02 4735 5666**

**DATA
SHEET**

ITEM: SCRUB UP TROUGH

CODE: SUT-1

DATE:	FEBRUARY - 2003		
REV:	C	PAGE No:	108