

STAINLESS METAL CRAFT

6 BROMLEY ROAD EMU PLAINS 2750
PHONE: (02) 4735 5666 FAX: (02) 4735 7950
E-MAIL info@smcstainless.com.au
www.smcstainless.com.au

THE STAINLESS STEEL PEOPLE

(SINCE 1962)

MATERIAL - GRADE 304 STAINLESS STEEL

TRENCH GRATE SERIES 1

OPTIONS

- * MARINE GRADE 316
- * LOADING TO SUIT
- * ANGLE FRAME AVAILABLE
- * STAINLESS STEEL CHANNEL DRAIN LINING



* TYPICAL USE -
-- FLOOR DRAINAGE

* BATHROOM - KITCHEN - GARAGE - BALCONY - ENTRY MAT - POOL

* SIZES OF FRAMES AND GRATES TO SUIT YOUR APPLICATION.

* SURFACE FINISH TO SUIT YOUR APPLICATION

* LOADING AS REQUIRED.

**DATA
SHEET**

ITEM: TRENCH GRATE

CODE: TG-1

DATE:

FEBRUARY - 2003

REV:

C

PAGE No:

4

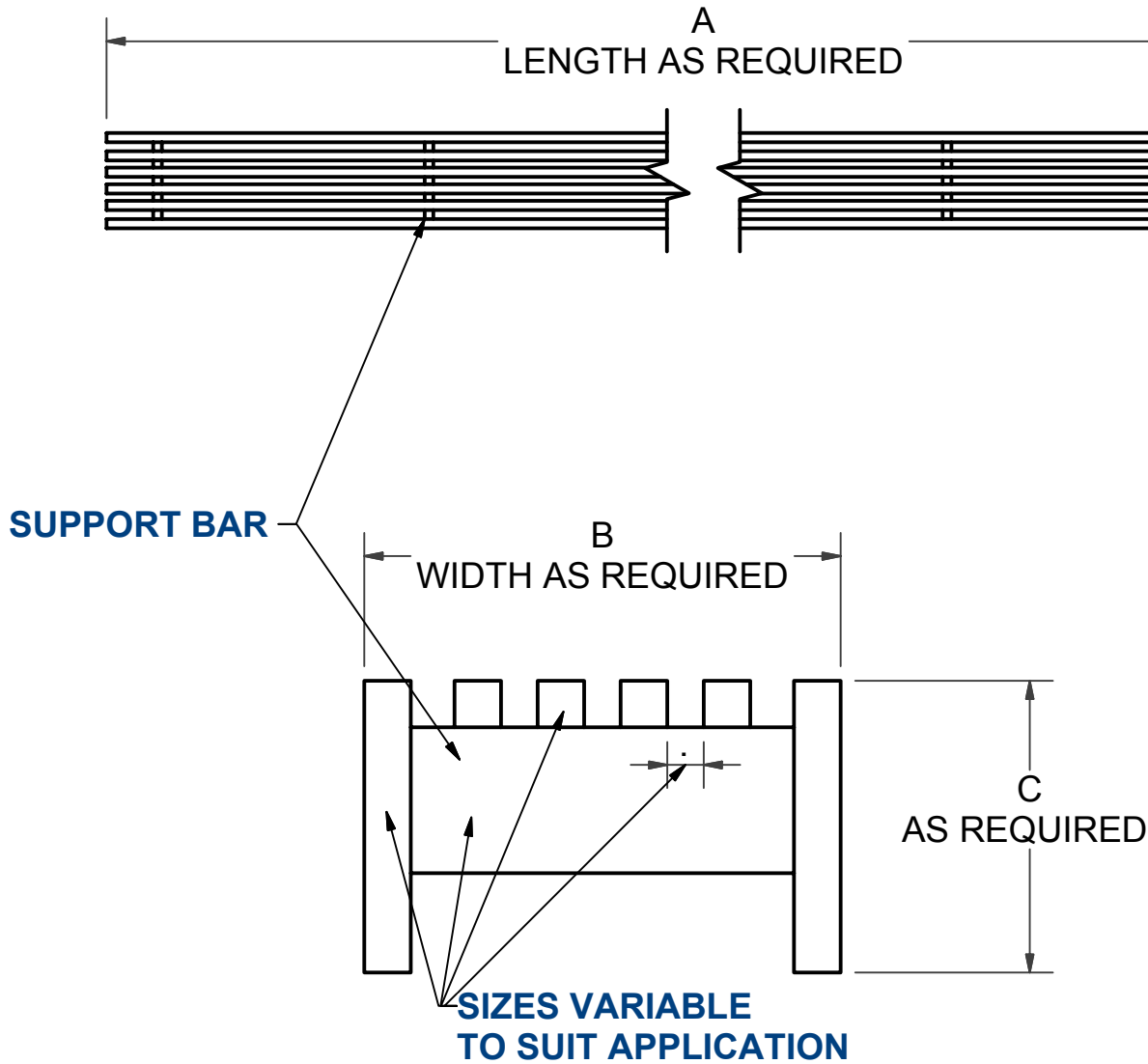
STAINLESS METAL CRAFT

6 BROMLEY ROAD EMU PLAINS 2750
 PHONE: (02) 4735 5666 FAX: (02) 4735 7950
 E-MAIL info@smcstainless.com.au
www.smcstainless.com.au

THE STAINLESS STEEL PEOPLE

(SINCE 1962)

MATERIAL - GRADE 304 STAINLESS STEEL



**SPECIFICATIONS -
 STAINLESS STEEL TRENCH GRATE
 SHALL BE MODEL TG-1 FROM
 STAINLESS METAL CRAFT
 PHONE: 02 4735 5666**

| LOADING | |
|---------------|-----|
| PEDESTRIAN | P/D |
| MEDIUM | M/D |
| HEAVY CLASS C | H/D |

| SIZE REQUIRED | |
|---------------|--|
| A | |
| B | |
| C | |

DATA SHEET

ITEM: TRENCH GRATE

CODE: TG-1

DATE:

FEBRUARY - 2003

REV:

C

PAGE No:

4