

STAINLESS METAL CRAFT

6 BROMLEY ROAD EMU PLAINS 2750
PHONE: (02) 4735 5666 FAX: (02) 4735 7950
E-MAIL info@smcstainless.com.au
www.smcstainless.com.au

THE STAINLESS STEEL PEOPLE

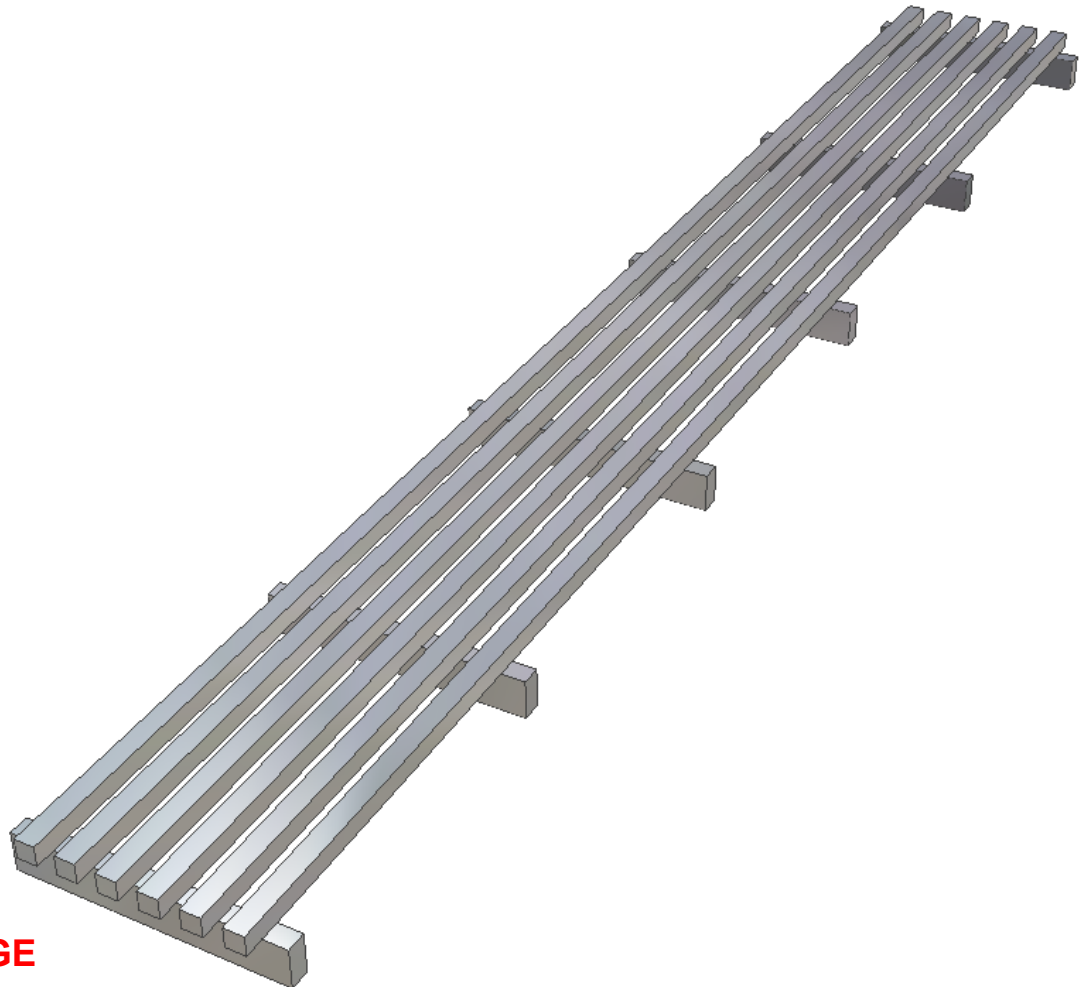
(SINCE 1962)

MATERIAL - GRADE 304 STAINLESS STEEL

TRENCH GRATE SERIES 3

OPTIONS

- * MARINE GRADE 316
- * ANGLE FRAME AVAILABLE
- * STAINLESS STEEL CHANNEL DRAIN LINING



- * TYPICAL USE -
-- FLOOR DRAINAGE
- * BATHROOM - KITCHEN - GARAGE - BALCONY - ENTRY MAT - POOL
- * SIZES OF FRAMES AND GRATES TO SUIT YOUR APPLICATION.
- * SURFACE FINISH TO SUIT YOUR APPLICATION
- * LOADING AS REQUIRED.

**DATA
SHEET**

ITEM: TRENCH GRATE

CODE: TG-3

DATE:

FEBRUARY - 2003

REV:

C

PAGE No:

6

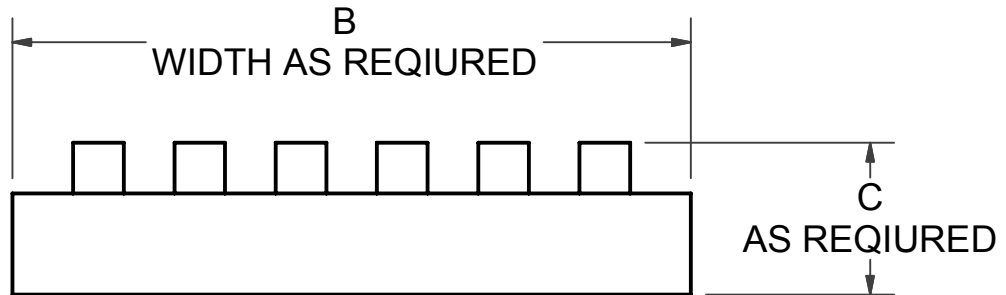
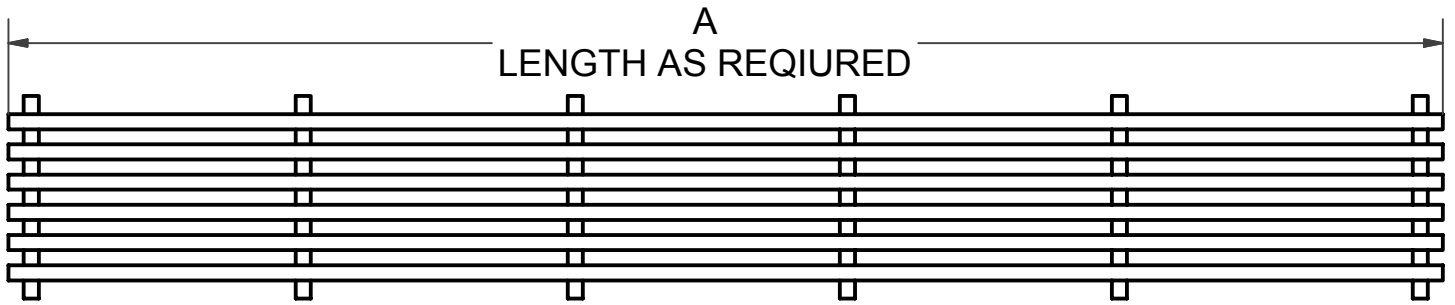
STAINLESS METAL CRAFT

6 BROMLEY ROAD EMU PLAINS 2750
 PHONE: (02) 4735 5666 FAX: (02) 4735 7950
 E-MAIL info@smcstainless.com.au
www.smcstainless.com.au

THE STAINLESS STEEL PEOPLE

(SINCE 1962)

MATERIAL - GRADE 304 STAINLESS STEEL



**SPECIFICATIONS -
 STAINLESS STEEL TRENCH GRATE
 SHALL BE MODEL TG-3 FROM
 STAINLESS METAL CRAFT
 PHONE: 02 4735 5666**

SIZE REQUIRED	
A	
B	
C	

LOADING	
HEAVY CLASS C	H/D

DATA SHEET

ITEM: TRENCH GRATE

CODE: TG-3

DATE:	FEBRUARY - 2003
REV:	C
PAGE No:	6